

Lighting Design for the Performing Arts

Abigail Pasternak '25
Faculty Advisor: Amy Radbill

Field Supervisors: Alyssandra Docherty and Lily Fossner

Fall 2024



Course Overview

For the past semester I have been a lighting design assistant for two professional, freelance lighting designers: Aly Docherty and Lily Fossner. As their assistant, I followed and assisted them at six different theatres across the greater Philadelphia area. In each location, I got to know different designers and technicians and was required to adapt to each project under the mentorship of the respective designer.

Projects

1. Philadelphia Women's Theatre Festival at Theatre Exile

This was the PWTF's 10th anniversary. Aly designed the mainstage production; I designed one person shows and staged readings.

2. Kinky Boots at Delaware Theatre Company with New Light Theatre

New Light Theatre is a company based in Delaware with a focus on showcasing new and upcoming artists. NLT partnered with Delaware Theatre Company to produce this musical.

3. RENT at Steel River Playhouse

This was a smaller, community production in Pottstown, PA and my first production assisting Lily.

4. Intimate Apparel at Arden Theatre Company

On this show, technical changes were made throughout tech week so I was able to see how the lighting evolved alongside the work of other designers.

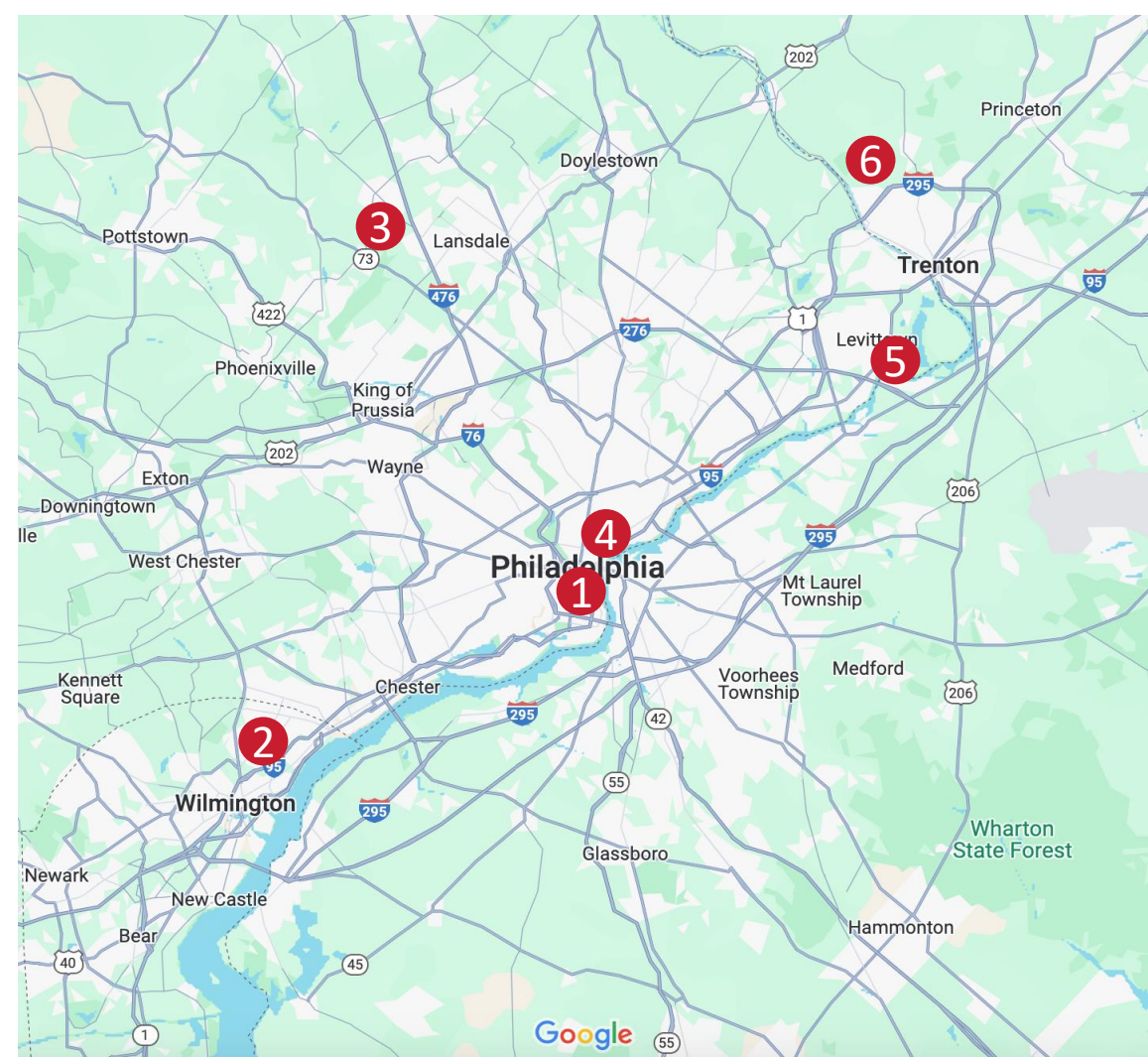
5. John Proctor is the Villain at Bryn Mawr College

For this show, I worked in a space I knew well in a position that I am still new to. Balancing my duties for Lily and my familiarity with the space, the people, and the work I normally do for Bryn Mawr theatre was definitely a learning experience, but a rewarding one.

6. Brian Sanders' JUNK at Hopewell Theatre

This show was unique among my Praxis shows in both content and in responsibilities. In addition to being Aly's assistant, I hung and cabled lights and prepared my own cue list for show runs.

Theatre Locations



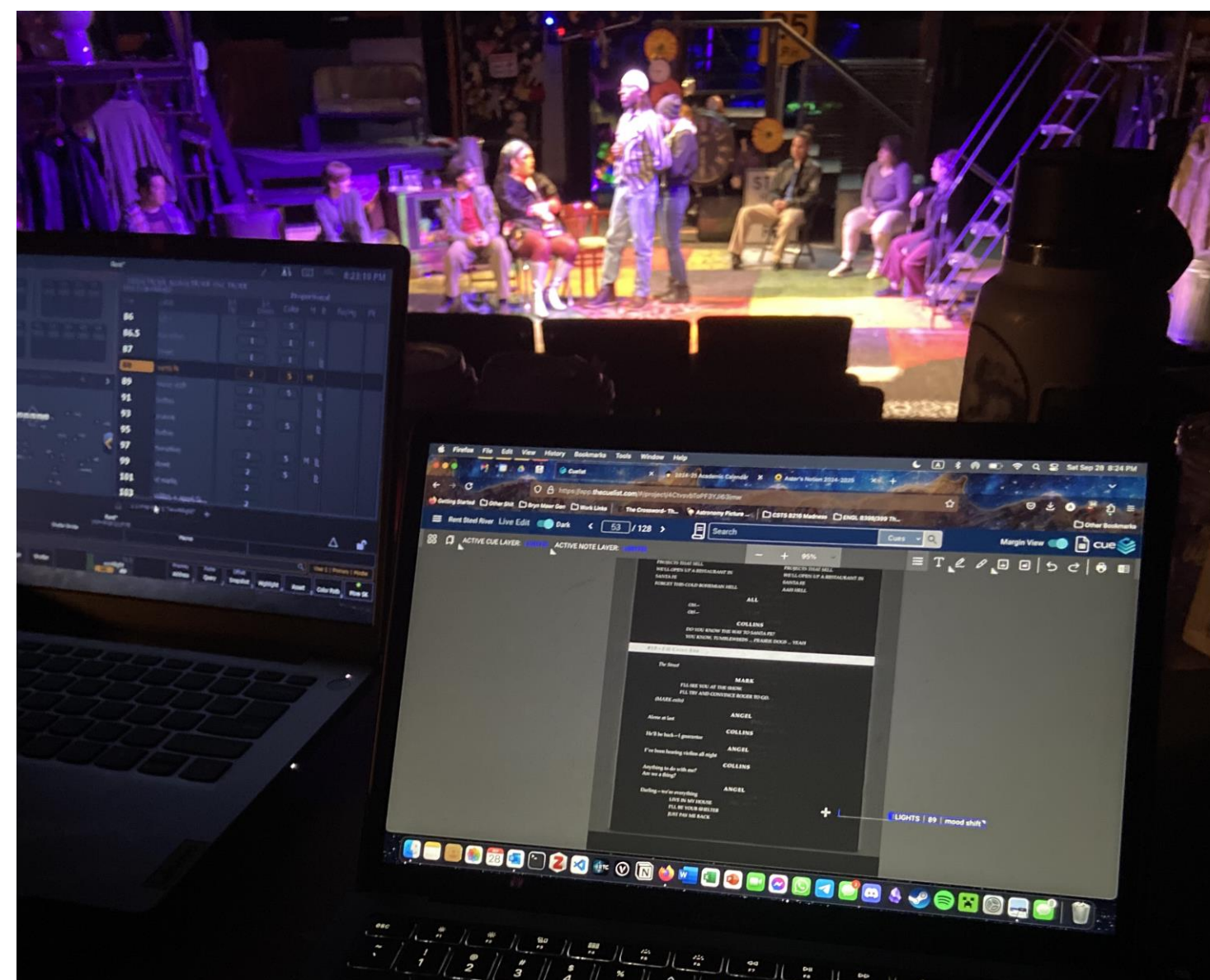
The various theatres I worked at this semester.

Design Paperwork

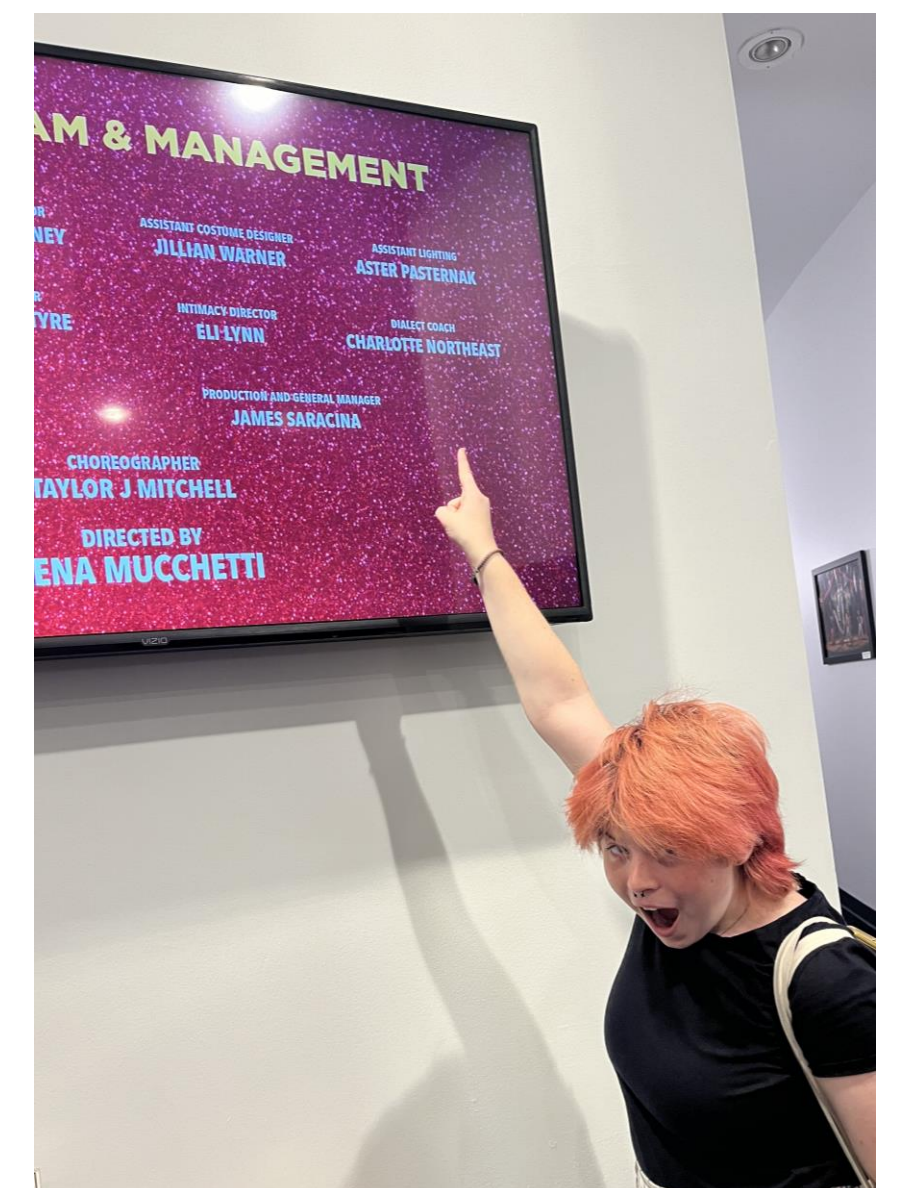
I learned how to create and keep design paperwork including magic sheets, different types of cue lists, and focus charts.

27 26 25 28	48 47 46 45	9 8 7 6
24 23 22 21 29	49 44 43 42 41	5 4 3 2 1
SL AMBR F/L L108	SR BLU F/L L501	F/L R3208
GRP 21	GRP 41	GRP 1
37 36 35 38	58 57 56 55	
34 33 32 31 39	59 54 53 52 51	
SL BLU F/L L501	SR F/L R55	
GRP 31	GRP 51	

Section of Kinky Boots magic sheet



In rehearsal for Steel River Playhouse's RENT.



Seeing my name on the Kinky Boots credit board.



Mayme and Esther in Arden Theatre Company's Intimate Apparel. Photo by Ashley Smith, Wide Eyed Studios.



Cast of New Light Theatre and Delaware Theatre Company's Kinky Boots. Photo by Lena Mucchetti.